



# The Park at French Creek

## NEWSLETTER

August 2011

### Board of Directors

Basil Foy, President  
skiper38@satx.rr.com

Randy Wilkinson, Vice-President  
rgwilkinson62@att.net

Dorrie Anders, Sec'y/Treasurer  
jasonanddorrie@mac.com

### Committee Contacts

#### Safety

Al Alanis  
aalanis@satx.rr.com

#### Social

Carol Kumler  
carolk22304@yahoo.com

#### Welcome

Teresa Moran  
soytere.1015@att.net

#### Beautification

Dorrie Anders  
jasonanddorrie@mac.com

#### Newsletter

Kathleen Wurn  
kmwurn@satx.rr.com

The PFC is managed by Association Management Services (AMS). Our contact is:

John Bourchier  
john@ams-sa.com  
210-829-7202

1600 NE Loop 410 #202  
San Antonio, TX 78209

### Yard of the Month Winners

Congratulations to The Park at French Creek Yard of the Month winners for the months of May, June, & July. Chairperson Dorrie Anders commented: "The winners' hard work, perspiration, and diligence during the drought have been recognized with this honor."



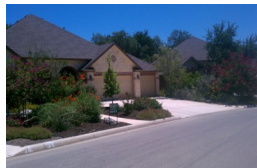
#### May

Jim & Sue Majors  
9602 Shanes Woods



#### June

Tom & Kathleen Wurn  
13802 French Park



#### July

Norm & Bebe Descoteaux  
13906 French Oaks

### Beautification Committee Report

Yard of the Month started mid-May and will continue until mid-October. Dorrie Anders, Committee Chair, said: "I know we will have a challenge this year keeping our yards green because of water restrictions, but we're praying for some rain and cooler temperatures." The judging for Yard of the Month honors is done by a non-resident.

Flags were placed on lawns and at the entrance for Memorial Day and the Fourth of July. For Flag Day, flags graced the entrance to the subdivision. This patriotic gesture has become a tradition at PFC.

SPEED  
LIMIT  
25

Please observe the Speed Limit and Stop Signs when driving through the Park at French Creek.



### Hausman Fence Line Re-stained



A special "Thank You" to Board Member Dorrie Anders for heading up this improvement project.

### Safety Committee Report

The Safety Committee established a 2011 goal to focus on ways to address speeding within our neighborhood. Although numerous suggestions have been proposed and debated, the central theme appears to be how best to alter driver behavior. The committee will continue to focus on this issue and re-recommend a plan of action which can be supported by the PFC community.

The committee will research the feasibility of using solar-powered units for lighting around the mailbox areas as an alternative to installing costly electrical lighting.



### The Park @ French Creek

#### National Night Out

October 4

The Safety Committee is looking for volunteers to help (setting up, serving, and taking down) with PFC's National Night Out. If you are interested, please contact Al Alanis. Also, if you have suggestions for entertainment, please contact Al.

### Welcome New Neighbors

The Welcome Committee greeted the following new residents:

- Jeff and Heather Gurtcheff  
13610 French Park
- Charles and Tracy Brady  
13610 French Oaks
- Armando and Delia Aguero  
13603 French Oaks
- Michael and Sherry Murphy  
9623 French Walk
- Jason and Anita Byron  
9603 French Walk



### Roll the Dice

We have a ladies' Bunco group that meets monthly. Even if you do not want to participate every month, or you want to meet some of your neighbors, or you just want to learn how to play Bunco, you are welcomed to attend. If you are interested, contact Teresa Moran at soytere.1015@att.net.

### New Board Members Needed

Concerned about the neighborhood? Have ideas about improvements? Then, think about running for the HOA Board. The current board members do not plan to seek re-election at the homeowners' meeting, which will be held in October. HOA will be sending information regarding the annual meeting and elections later.

### Home Improvements

Are you thinking of adding something here or changing something there? Don't forget to submit for approval to the Architectural Control Committee (ACC) before starting those wonderful improvements to your property. Obtaining ACC approval protects the changes made to your home and assures that all owners adhere to the guidelines provided in your documents. For a copy of an Improvement Request Form, contact our ACC department at acc@ams-sa.com or download a form from the website at www.parkatfrenchcreek.com/forms.html.

Remember, the only acceptable stains for fences are Behr Natural and Behr Cedar. Any other color must be approved following the procedures mentioned above.



## STAGE 2 Drought Restrictions



San Antonio Water System uses drought restrictions, established by city ordinance, to proactively manage the region's water resources.

Stage Two Restrictions begin when the Edwards Aquifer level drops to 650 feet mean sea level at the monitored well.

- ▶ All restrictions from Stage One remain in effect, unless added to or replaced by Stage Two rules.
- ▶ Landscape watering with an irrigation system, sprinkler or soaker hose is allowed **only once a week from 3-8 a.m. and 8-10 p.m.** on your designated watering day, as determined by your address.
- ▶ Watering with drip irrigation is permitted any day, but only between 3-8 a.m. and 8-10 p.m.
- ▶ Watering with a hand-held hose is allowed any time on any day.
- ▶ Use of fountains, waterfalls, or other aesthetic water features — outdoors or indoors — is prohibited, unless a variance has been granted for 100 percent non-potable water use.
- ▶ All non-public swimming pools must have a minimum of 25 percent of the surface area covered with evaporation screens when not in use. Inflatable pool toys or floating decorations may be used for this purpose.
- ▶ Washing impervious cover such as parking lots, driveways, streets or sidewalks is prohibited. Health and safety exceptions to this rule may be requested from SAWS in writing.
- ▶ Residential washing of vehicles or other equipment is allowed only on assigned watering days and times. A hose with an automatic shut-off nozzle or bucket of five gallons or less may be used. Water should not be allowed to run into the street.
- ▶ The use of commercial car wash facilities is allowed any day.
- ▶ Operators of golf courses, athletic fields and parks must submit a conservation plan to SAWS. For requirements, contact SAWS at 704-SAVE. Golf courses, athletic fields and parks may not irrigate between 10 a.m. and 8 p.m.
- ▶ Hotels, motels and other lodging must offer and clearly notify guests of a "linen/towel change on request only" program.

The use of treated wastewater or recycled water is a defense to prosecution under these rules. Stage Two restrictions continue until there is an announcement in the newspaper that Stage Two has been canceled or that Stage Three is in effect.

San Antonio Water System • 2800 U.S. Hwy 281 North • P.O. Box 2449 • San Antonio, TX 78298-2449  
210.704.7297 • www.saws.org

Rev 6/24/2009

Landscape watering with an irrigation system, sprinkler or soaker hose is allowed **only once a week, from 3-8 a.m. and 8-10 p.m.** on your designated watering day.

### WATERING SCHEDULE

Last Digit of Street Address	Watering Day
0 or 1	Monday
2 or 3	Tuesday
4 or 5	Wednesday
6 or 7	Thursday
8 or 9	Friday

No watering on weekends with a sprinkler, soaker hose or irrigation system. Areas without a street address, such as medians and neighborhood entryways, water on Wednesday.

And don't forget to follow these year-round rules:

- Water waste is prohibited at all times. This includes lawn watering overspray and runoff.
- Restaurants may serve water only on request (to reduce dishwashing).
- Charity car washes allowed only at commercial car wash facilities.

For more information:

- [www.saws.org/drought](http://www.saws.org/drought)
- [conserve@saws.org](mailto:conserve@saws.org)
- 210-704-SAVE

If you would like to submit articles for the newsletter, have any suggestions on improving the newsletter, or you know of someone who is not receiving the newsletter, please e-mail Kathleen Wurn at kmwurn@satx.rr.com

### A Friendly Reminder



When walking your pet(s), please "pick up the poop" deposited by your pet(s). This is not a major problem, but it is still a problem. Thanks to all who pick up after their pets (and this is the majority). Please be considerate of your neighbors.

SPEED LIMIT

25

Be a responsible neighbor.

Please observe the speed limit.

**PFC Homeowner's Website: [www.parkatfrenchcreek.com](http://www.parkatfrenchcreek.com)**